

沖縄県臨床細胞学会定例会

施設名：中部徳洲会病院

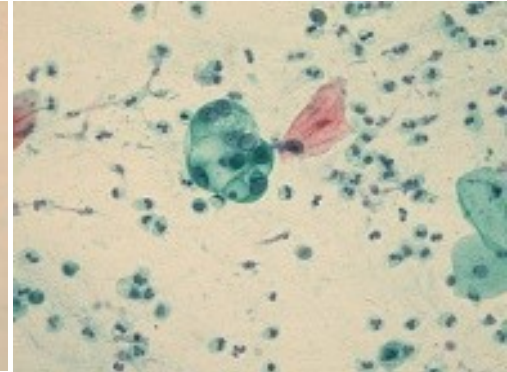
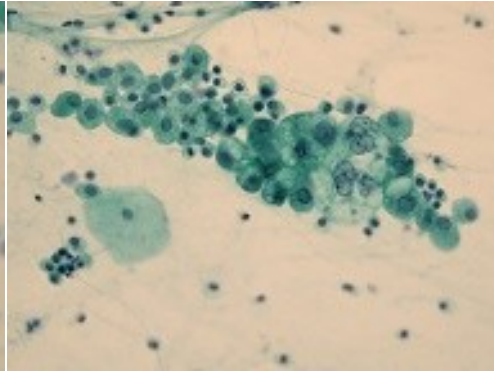
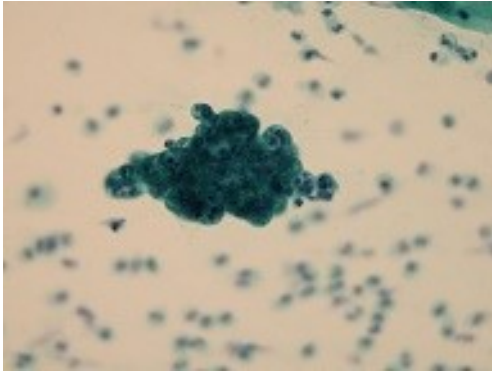
症例

- ① 採取検体：喀痰、気管支擦過、気管支洗浄液
- ② 年齢・性別：70歳代・男性
- ③ 臨床経過：長引く咳、痰も多い。COPD、気管支喘息疑い、r/o 悪性腫瘍
- ④ 細胞像・細胞像の写真

喀痰 Pap ×40

喀痰 Pap ×40

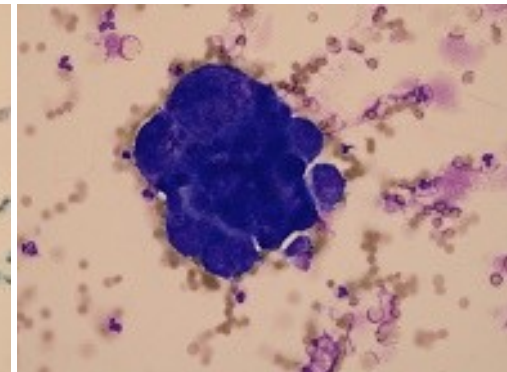
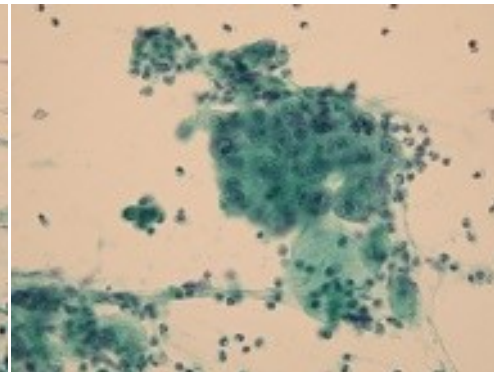
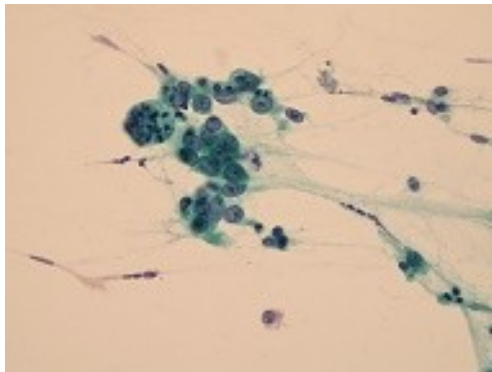
喀痰 Pap ×40



気管支擦過 Pap ×40

気管支洗浄液 Pap ×40

気管支洗浄液 Giemsa ×40



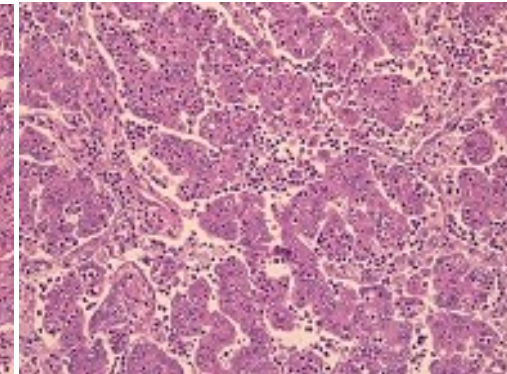
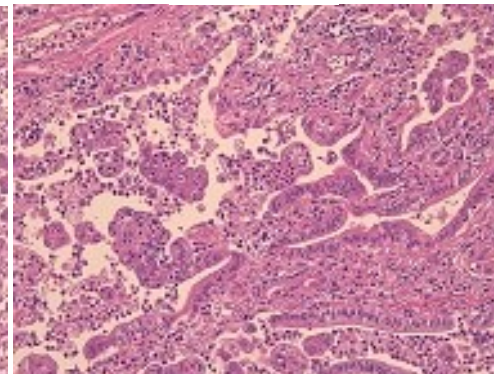
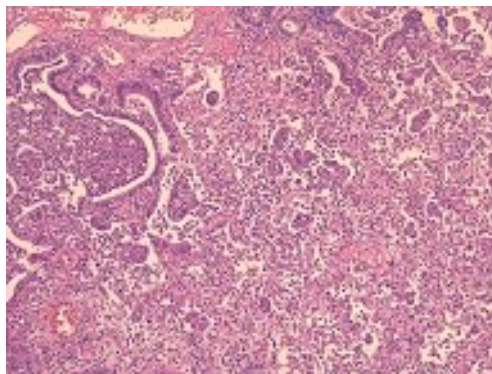
⑤ 細胞診判定：Class III suspicious

⑥ 組織診断：invasive adenocarcinoma・interstitial pneumonia・肺線維症の合併

HE ×10

HE ×10

HE ×10



⑦ まとめ・ポイント

核腫大、細胞質からの核の飛び出し像、細胞質が反応性に比べ薄い、組織球との鑑別